

# Wireless-N WiFi Repeater

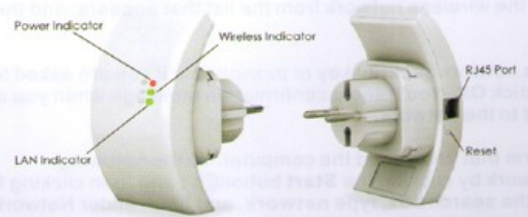
## Quick Installation Guide(Q.I.G.)



REV.1.0

## Introduction :

The WiFi Repeater is a combined wired/wireless network connection device designed specifically for small business, office, and home office networking requirements. It allows a wireless network to be expanded using multiple access points without the need for a wired backbone to link them. It also works well with other 11b/g and 11n protocol wireless products.



**NOTE:** If you need to **reset** the Wi-Fi Repeater, you need press and hold the reset button inside the tiny hole for **10 seconds**.

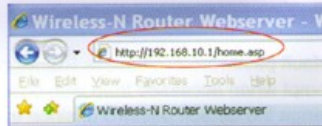
## Package Contents

Before you starting to use this router, please check if there's anything missing in the package, and contact your dealer of purchase to claim for missing items:

- 1 x Wireless-N Repeater
- 1 x RJ-45 Networking Cable
- 1 x Quick installation Guide



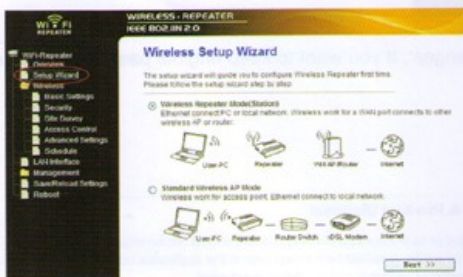
A4. Open web browser and type **http://192.168.10.1** in the browser's address box. This number is the default IP address for this device.



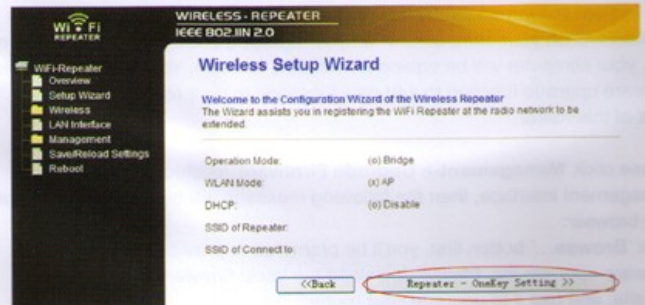
A5. The login screen below will appear. Enter the "User Name" and "Password" and click "OK" to login. The default User name is "admin" and the Password is "admin".



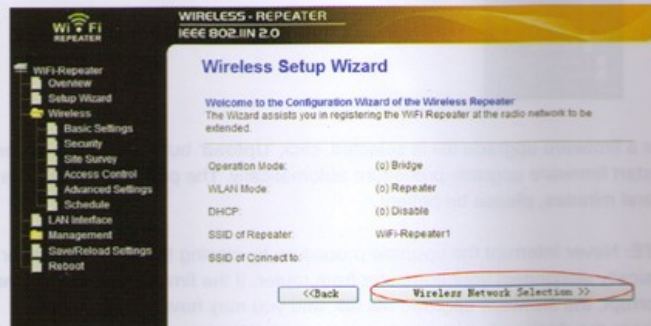
A6. After logging in and click "Setup Wizard", you will see the web page below: Select "Wireless Repeater Mode (Station)" and click on "Next" to continue.



A7. Click on 'Repeater – OneKey Setting' button



A8. Wait a few seconds and you will see the site below and please click on 'Wireless Network Selection' button.

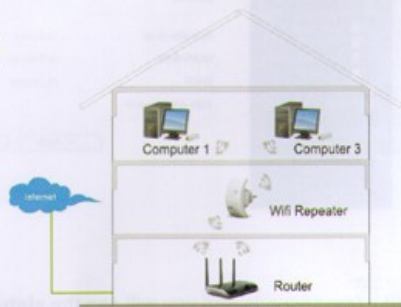


**Setting up a Wireless Infrastructure Network**

For a typical wireless setup at home (as shown below), please do the following:

**Wireless Repeater Mode**

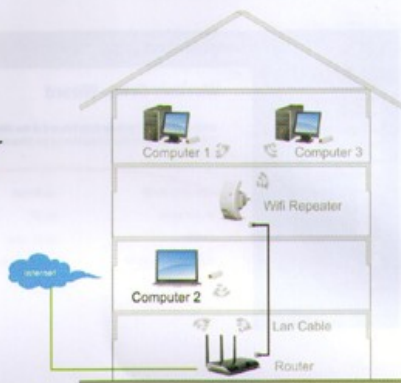
You will need WiFi AP/Router Internet access



**Wireless AP Mode**

You will need broadband Router Internet access

Connect the WiFi-Repeater to your Router/Switch with RJ-45 Cable

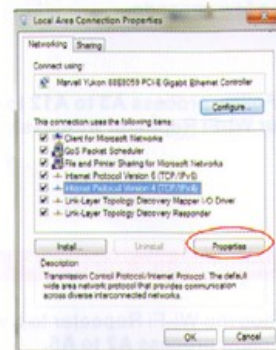


You can configure the Wi-Fi Repeater by connecting it with your computer/laptop with enclosed RJ45 cable or wirelessly. **We recommend you to do it with wire.**

**A. Configure the Wi-Fi Repeater with RJ45 Cable**

A1. Plug the Wi-Fi Repeater to a wall socket. Connect your computer / laptop with the Wi-Fi Repeater with enclosed RJ45 Cable.

A2. Click the "Start" button (it should be located at the lower-left corner of your screen), then click "Control Panel". Click "View Network Status and Tasks", and then click "Manage Network Connections". Right-click "Local Area Network", then select "Properties". When the "Local Area Connection Properties" window appears, select "Internet Protocol Version 4 (TCP/IPv4)" and then click "Properties".



A3. Setting IP address manually: Type IP address is **192.168.10.x** (x is from 2 to 254), and Subnet mask is **255.255.255.0**. Type the Router's LAN IP address (the default IP is **192.168.10.1**) into the Default gateway field.



A9. Click on 'Refresh List' button. Select the Wireless SSID and click 'Next' to continue.

**Wireless Site Survey**

This page provides tool to scan the wireless network. If any Access Point or IBSS is found, you could choose to connect it manually when Repeater mode is enabled. Select in this list the radio network you would like to extend.

Refresh List

SSID	BSSID	Channel	Type	Encrypt	Signal	Select
SSID1	02:05:43:83:07:70	1 (B+G-N)	AP	WPA-PSK/WPA2-PSK	44	<input checked="" type="radio"/>
SSID2	00:25:5e:1d:9d:81	6 (B+G-N)	AP	WPA-PSK	30	<input type="radio"/>
SSID3	00:0a:0b:52:11:16	6 (B+G-N)	AP	WPA2-PSK	28	<input type="radio"/>
SSID4	10:9a:0d:89:5e:b7	11 (B+G-N)	AP	WPA2-PSK	24	<input type="radio"/>
SSID5	00:v0:4c:81:96:c1	6 (B+G-N)	AP	no	20	<input type="radio"/>

Next >>

A10. When you see the site below, please do not change any setting but only insert the password of your network.

**Wireless Site Survey**

This page provides tool to scan the wireless network. If any Access Point or IBSS is found, you could choose to connect it manually when Repeater mode is enabled. Select in this list the radio network you would like to extend.

Encryption: WPA2

Authentication Mode:  Enterprise (RADIUS)  Personal (Pre-Shared Key)

WPA2 Cipher Suite:  TKIP  AES

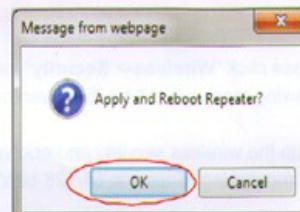
Pre-Shared Key Format: Passphrase

Pre-Shared Key: \*\*\*\*\*

Apply and Reboot

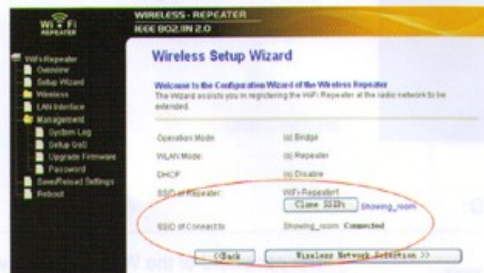
Click on 'Apply and Reboot' button.

A11. Click 'OK' to confirm. The Repeater will restart.



A12. Wait a few seconds and you will see the status site like below. It means your Wi-Fi Repeater is ready for use.

The **Wi-Fi Repeater1** WLAN key is same with your router.

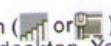


If you do not see the site like above, you need to re-configure it again.

**NOTE:** If you need to **reset** the Wi-Fi Repeater, you need press the reset button inside the tiny hole for 10 seconds.



**B. Configure the Wi-Fi Repeater wirelessly.**

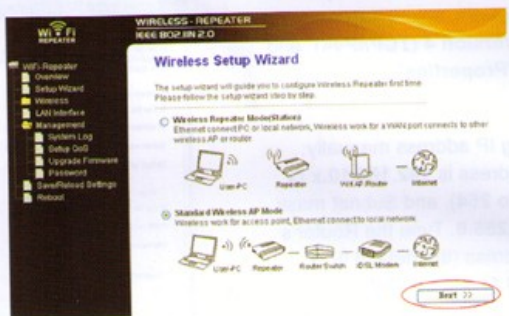
1. Plug the Wi-Fi Repeater to a wall socket.
2. Click on the network icon (  ) on the right bottom of your desktop. You will find the signal from the Wi-Fi Repeater. Click on 'Connect' and wait for a few seconds.



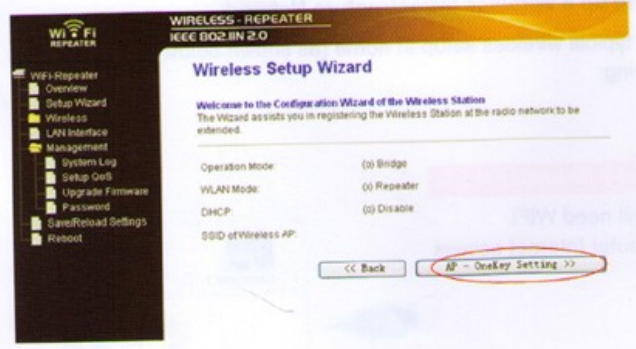
3. Follow process **A3 to A12** to configure your Wi-Fi Repeater wirelessly.

**C. Configure the Wireless AP Mode.**

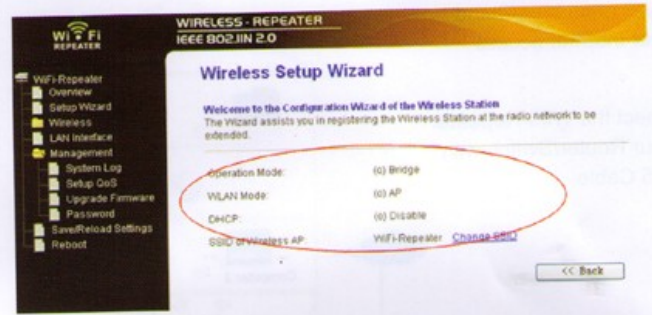
1. Plug the Wi-Fi Repeater to a wall socket.
2. Follow process **A2 to A5**.
3. Select "Standard Wireless AP Mode" and click on 'Next' to continue.



**4. Click on 'AP - OneKey Setting' button**



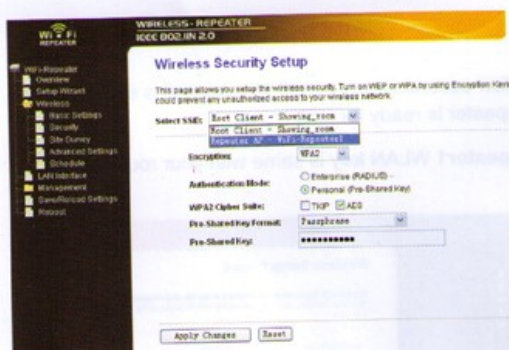
5. Wait a few seconds and you will see the status site like below. It means your Wi-Fi Repeater is ready for use.



**Wireless Security Configuration**

Please click "**Wireless-> Security**" located at the web management interface, the following message will be displayed on your web browser:

Setup the wireless security and encryption to prevent from unauthorized access and monitoring. Supports 64/128-bit WEP, WPA, WPA2 encryption methods.



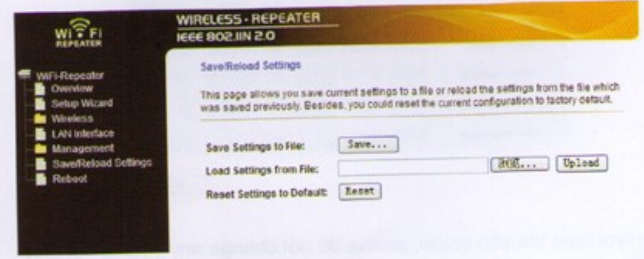
**Select SSID:**

Root - Client - XXXX:	The password of the WiFi Repeater will be the same as your XXXX router.
Repeater AP - Wi-Fi-Repeater1:	Select this option to set up the password for your WiFi repeater

**Factory Default and Settings Backup , Restore**

You can backup all Setting of this router to a file, so you can make several copied of router configuration for security reason.




To backup or restore router setting, please follow the following instructions: Please click '**Save/Reload setting**' located at the web management interface, then the following message will be displayed on your web browser:




Save Settings	Press 'Save...' button, and you'll be prompted to download the configuration as a file, you can please save it as another filename for different versions, and keep it in a safe place.
Load Settings	Press ' <b>Browse...</b> ' to pick a previously-saved configuration file from your computer, and then click ' <b>Upload...</b> ' to transfer the configuration file to router. After the configuration is uploaded, the router's configuration will be replaced by the file you just uploaded.
Reset Settings	Click this ' <b>Reset</b> ' button to remove all settings you made, and restore the configuration of this router back to factory default settings

## How to connect your computer/laptop with the Wi-Fi Repeater

### Adding a Wireless computers to the WiFi-Repeater

1. Log on to the computer.
2. Open Connect to a Network by right-clicking the network icon (  or  ) in the notification area.
3. Choose the wireless network from the list that appears, and then click **Connect**.
4. Type the network security key or passphrase if you are asked to do so, and then click **OK**. You'll see a confirmation message when you are connected to the network.
5. To confirm that you added the computer, do the following:  
Open Network by clicking the **Start** button , and then clicking **Control Panel**. In the search box, type **network**, and then, under Network and Sharing Center, click **View network computers and devices**. You should see icons for the computer you added and for the other computers and devices that are part of the network.  
**Note** : If you don't see icons in the Network folder, then network discovery and file sharing might be turned off.

### Adding a wired (Ethernet) computer to the WiFi-Repeater

1. Plug the computer into WiFi-Repeater and then turn it on.
2. To confirm that you added the computer, do the following:  
Open Network by clicking the **Start** button , and then clicking **Control Panel**. In the search box, type **network**, and then, under Network and Sharing Center, click **View network computers and devices**. You should see icons for the computer you added and for the other computers and devices that are part of the network.

For more information:  
<http://windows.microsoft.com/en-US/windows7/Add-a-device-or-computer-to-a-network>  
<http://windows.microsoft.com/en-US/windows7/Setting-up-a-wireless-network>  
<http://windows.microsoft.com/en-US/windows-vista/Setting-up-a-wireless-network>

## Configuring via Web Browser

### Wireless Base Configuration

Please click "**Wireless -> Basic Settings**" located at the web management interface, the following message will be displayed on your web browser:

You could configure the minimum number of Wireless settings for communication, such as Network Name (**SSID**) and Channel. The Access Point can be set simply with only the minimum setting items.



Disable Wireless	Wireless On/Off
Mode	Supports AP / Repeater modes.
SSID of AP or SSID of Connect to	Main Service Set Identifier. It's the "name" of your wireless network.
SSID of Extended	Universal Repeater Mode (Acting as AP and client simultaneously)
Band	Supports 11B/11G/11N mixed modes.



## Firmware Upgrade

The system software used by this router is called as 'firmware', just like any applications on your computer, when you replace the old application with a new one, your computer will be equipped with new function. You can also use this firmware upgrade function to add new functions to your router, even fix the bugs of this router.

Please click '**Management-> Upgrade Firmware**' located at the web management interface, then the following message will be displayed on your web browser:

Click '**Browse...**' button first, you'll be prompted to provide the filename of firmware upgrade file. Please download the latest firmware file from our website, and use it to upgrade your router.



After a firmware upgrade file is selected, click '**Upload**' button, and the router will start firmware upgrade procedure automatically. The procedure may take several minutes, please be patient.

**NOTE:** Never interrupt the upgrade procedure by closing the web browser or physically disconnect your computer from router. If the firmware you uploaded is corrupt, the firmware upgrade will fail, and you may have to return this router to the dealer of purchase to ask for help. (Warranty voids if you interrupted the upgrade procedure).

## Change Management password

Default password of Wireless Router is "admin", and it's displayed on the login prompt when accessed from web browser. There's a security risk if you don't change the default password, since everyone can see it. This is very important when you have wireless function enabled.

To change password, please follow the following instructions:  
Please click '**Management -> Password**' menu on the web management interface, the following message will be displayed on your web browser:



click '**Apply Changes**'; If you want to keep original password unchanged, click '**Reset**'.

### WEEE Directive & Product Disposal



At the end of its serviceable life, this product should not be treated as household or general waste. It should be handed over to the applicable collection point for the recycling of electrical and electronic equipment, or returned to the supplier for disposal.

