

Canon CLI8 & PGI5 Refilling Instructions

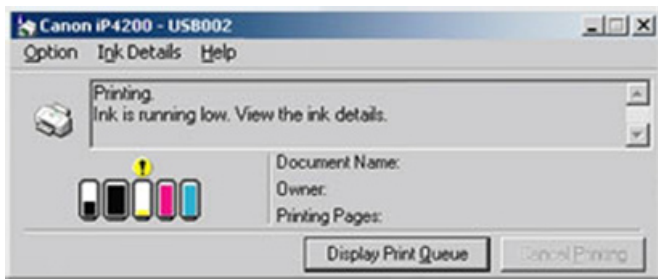
1. Remove the chip carefully from the OEM ink cartridge using a blade (As shown in picture A.)
2. The chip is now free from the cartridge. Discard the used cartridge.
3. Insert the chip on to the new cartridge making sure it is the correct colour cartridge, that the chip is the correct way up and the right way round (As shown in Picture B.)
4. Gently press the top of the chip down so the chip locates on the pins completely.
5. Your chip is now installed and the cartridge is ready to use.
6. Install your new cartridges into the printer as normal.



(A)



(B)



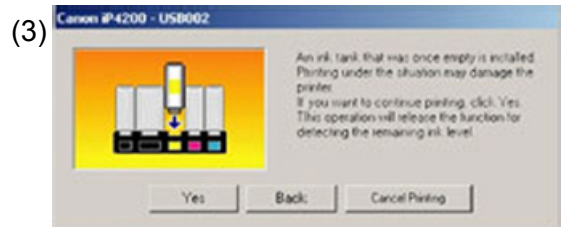
(1)



(2)

7. A dialog box will pop up, if the dialog box is like picture 1, please go on printing until another dialog box appears (as shown in picture 2). If a dialog box appears as shown in picture 2 directly, press the "Yes" to continue, which may be followed by two alternative dialog boxes: one is the reappearing of dialog box in picture 1, please repeat the steps as mentioned above; the other is a dialog box shown in picture 3, please operate according to the following instructions:

8. Click "Yes" after seeing the dialog box (See picture 3)
9. Click "Yes" after seeing the dialog box (See picture 4)
10. Click "OK" after seeing the dialog box (See picture 5)



(3)

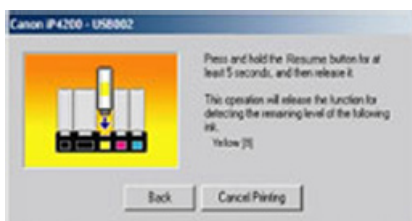


(4)



(5)

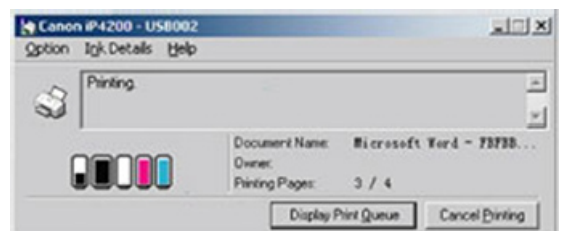
11. Do not click "Back" or "Cancel printing" Press and hold down the paper feed button for five seconds (See Picture c) and release the button. A dialog box will appear (See picture 7). In case a dialog box like picture 6 appears, please re-operate by pressing the paper feed button till the dialog box (picture 7) appears.



(6)



(C)



(7)